

*ICF Wildwater
Canoeing III. and
IV. World Cup
2023*

A stylized graphic featuring a dark blue canoe and a matching paddle. The canoe is positioned horizontally across the middle, with the paddle resting on it. The background consists of large, overlapping circles in shades of blue and light grey, creating a sense of motion and water. Small white circles are scattered throughout the light grey areas, resembling bubbles or splashes. The overall design is clean and modern, with a focus on the sport's equipment and the event's location and dates.

LIPNO
Czech Rep.
26th to 27th August



3 **WELCOME SPEECH** – CHAIRMAN OF CZECH CANOE UNION

4 **WELCOME SPEECH** – MAIN PARTNER OF THE RACE

5 **BASIC INFORMATION**

5 WELCOME TO LIPNO

5 WILDWATER FESTIVAL

6 **HOW TO GET TO THE PLACE**

7 **ACCOMMODATION**

8 **CATERING**

8 MAIN GASTRO

8 COFFEE

9 **GENERAL INFORMATION**

9 EVENT TITLE

9 EVENT DATE

9 CONTACT

9 EVENT DIRECTOR

10 **KEY DAYS AND DEADLINES**

11 **ENTRIES, ACCREDITATIONS & PARTICIPATION FEE**

11 ENTRIES & ACCREDITATIONS

11 PARTICIPATION FEE

11 BANK DETAILS

12 **CLASSIC COURSE**

12 WATER FLOW

12 TRACK

13 **ATTACHMENT 1 – LIPNO NAD VLTAVOU**

14 **ATTACHMENT 2 – VYŠŠÍ BROD**

3

WELCOME SPEECH 1.

Dear sports friends,

It is my honour to invite all sport lovers to the wildwater World cup which will take place on the 26th and 27th of August 2023, at Lipno lake.

On behalf of the Czech Canoe Union (CCU), I would like thank the International Canoe Federation (ICF) for the trust they have shown us, when putting us in charge of organizing this important event. Technical preparation of the race has been provided by SK Vltava Český Krumlov club, which is well experienced in holding annual local competitions on this track as well as the world-known Krumlovs marathon.

This racing track at Vltava river by Loučovice village is exceptional not only because of its difficulty and being set in some marvellous nature, but also it is not possible to practice here throughout much of the year. Hence, the whole race is fair for all participants attending from around the globe.

The Czech canoe union has successfully held many worldwide competitions in wildwater canoeing, such as the 2006 World Championship in Karlovy Vary, the 2003 Junior European Championship, and the 2003 - 2008 World cup. I am deeply convinced that organizing the World cup is going to be a successful continuance of previous events.

I am also certain that the 2023 World cup is going to bring all sportsmen not only experiences from racing this hard natural track, but also much enjoyment and knowledge while visiting one of the most beautiful regions of the Czech republic.

I have to express my thanks to all volunteers for the preparation of this difficult event. Thanks to all supporters and partners who have helped in organizing this occasion. I look forward to seeing you in Loučovice below Lipno lake.

Stanislav Ježek
Chairman
of Czech canoe union



4

WELCOME SPEECH 2.

Dear Racers,

One of the main partners of the Wildwater World Cup and the European Rafting Championship is our unique Lipno Family Resort, which offers you many amazing experiences at the South Bohemian sea.

So that you can fully enjoy your stay in Lipno nad Vltavou, we have prepared a unique special offer for all racers: 1+1 FREE entry to our resort's main attractions and a discount on admission and rental fees.

Thanks to this voucher, you can enjoy the unique Treetop Walkway with transport, downhill scooters, a rope park, a motorboat and an electric boat, or rent a bicycle at the INTERSPORT Rent Kapitanát rental shop and get a second bike FREE.

You can easily arrange everything at the cash desks in our Client Information Centre, where you can bring the voucher that you will find in your starter sets. The centre's staff will help you with everything else.

The 1+1 FREE SPECIAL OFFER means you can buy your chosen experience and get the same experience FREE. For example, buy a ticket to the Treetop Walkway and get the second one FREE.

The Client Information Centre is open daily from 8:30 to 18:30 and you can find it near the P1 parking lot next to the STODOLA restaurant.

This special offer is valid until 31 October 2023.

Main partner of the race



5

BASIC INFORMATION

WELCOME TO LIPNO

The third and fourth Wildwater World Cup will take place in Šumava, right down the Lipno dam, which we like to call the Czech Sea. With its length of 42 km and maximum width of 10 km, it is the largest water dam in the Czech Republic. Lipno and its surroundings are definitely worth visiting thanks to its spectacular landscape and stunning places. One such place is the Devil's Wall. It is located just below the race finish line.

There is also a legend connected to this place. It talks about a devil that was bothered by the construction of the monastery in Vyšší Brod and wanted to create a dam in the gorge to hold back the water and then flood the monastery. The Devil tossed huge boulders into the Vltava River; however, he had to finish the work before a black rooster crowed three times. Unfortunately for him, the devil did not make it in time and lost his power after the rooster crowed for the third time. At that moment, the bell on the monastery tower rang and the devil had to let go of the boulder which still bears the imprint of his infernal claw. He did not even know back then what a great track he had built for you. So, be careful and make sure your boat does not end up with his claw print too.

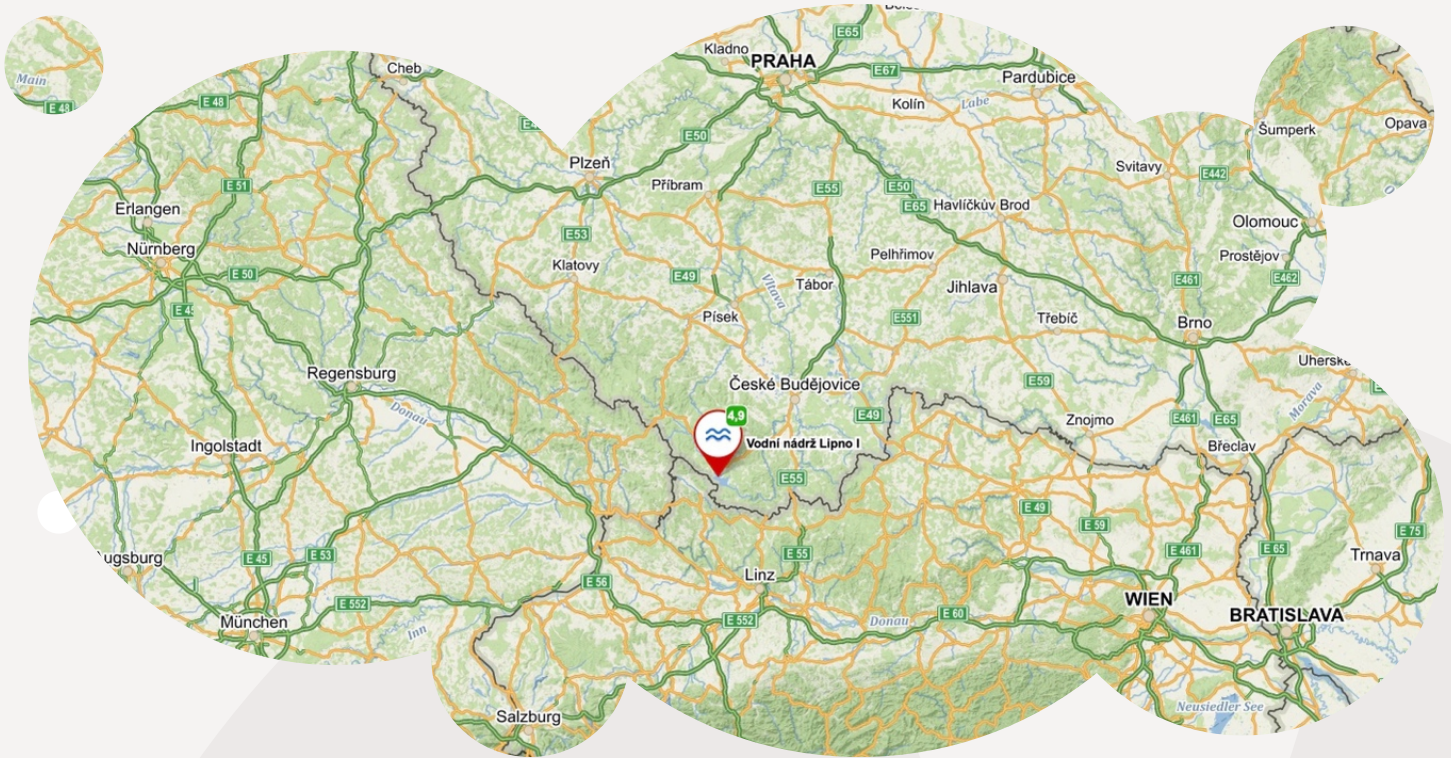
WILDWATER FESTIVAL

The last weekend in August will be called the Wildwater Festival and there is a great reason for it. Besides the Wildwater World Cup, there will also be the Czech Wildwater Cup, the European Rafting Championships, the Czech Republic Championships and the Czech Slalom Cup happening at the same time. In addition, hobby paddlers from all over will be coming this weekend too. Did you know that there is one whole train carriage reserved just for them to transport them from the finish line to the start position? During the last year's cup, there were so many tourists that they could not even fit into the carriages and had to sit on the locomotive, for example. This is something you can only experience in India and here in Lipno.

6

HOW TO GET TO THE PLACE

As already mentioned, the race will take place in Lipno, which means you will be heading to the South Bohemia region. Lipno is marked with a red pin on the map.



If you go to Lipno via Český Krumlov, there are two possible routes. The first route leads through the town of Černá v Pošumaví, which is the more comfortable option. You will arrive at the track from the top. The second route leads through the town of Vyšší Brod. The road is more winding and narrower in places. In this case, you will arrive at the track from the bottom.





Start area:

You will arrive at the start on the road marked with a blue line on the map. At the start, follow the instructions of the organiser, who will organise the parking.

- 1 Start
- 2 Between boobs - Two rocks you have to get between
- 3 Mare's head - The big stone needs to be passed from the right
- 4 Water roll „ŽELEZŇÁK“
- 5 Water rapid „PROKOP“
- 6 Lakes – the peacefull part
- 7 Weir on the river
- 8 Water rapid „Loučovice“
- 9 Finish

Finish area:

The finish is near the Area of the race. After finishing the race, the competitor will enter the Area of the race where the complete race facilities are located.

Area of the race:

When entering the venue, follow the instructions of the organiser, who will organise transport and parking on site.

- Parking
- Race office
- Gastro
- Ceremony place
- Chill zone
- Fan zone
- Toilets

7

ACCOMMODATION

We recommend searching for accommodation in the following cities.

Lipno nad Vltavou - 5 minutes from the racetrack

- ✓ Restaurant
- ✓ Grocery and drug store
- ✓ Pharmacy
- ✓ Health care - private
- Interesting place - Treetop walk *more in Attachment no. 1

Vyšší Brod - 9 minutes from the racetrack

- ✓ Restaurant
- ✓ Grocery and drug store
- ✓ Pharmacy
- ✓ Health care
- Interesting place – Monastery *more in Attachment no. 2

Frymburk - 11 minutes from the racetrack

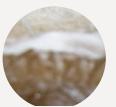
- ✓ Restaurant
- ✓ Grocery and drug store
- ✓ Pharmacy
- ✓ Health care
- Interesting place - Wellness

Černá v Pošumaví – 20 minutes from the racetrack

- ✓ Restaurant
- ✓ Grocery and drug store
- ✗ Pharmacy
- ✗ Health care

Český Krumlov – 35 minutes from the racetrack

- ✓ Restaurant
- ✓ Grocery and drug store
- ✓ Pharmacy
- ✓ Health care
- Interesting place – Castle and historical centre



8

CATERING

Dear competitors,

to ensure the best possible race experience, we have prepared a catering service for you at the finish area.

Throughout the weekend, you will be able to enjoy a variety of gastronomic delights that will fill your taste buds as you face the tough challenges of the course. From snacks to hearty main meals, we have something for everyone.

And that's not all! Already on Friday, during the Opening Ceremony, we have a little treat in store for you. We will be serving delicious soup and delicious cake absolutely free of charge! It's our little thank you for your participation and commitment to show your racing skills on Lipno.

MAIN GASTRO

OPENING TIME

Friday 15:00 – 20:00

Saturday 11:00 – 20:00

Sunday 11:00 – 20:00

MENU

Friday: Just beer, limo

Saturday: Soup: beef broth

Lunch: Penne with chicken and cream sauce

Dinner: Goulash with dumplings/bread

Sunday: Soup: garlic soup

Lunch: Chicken risotto with vegetables

Dinner: Gnocchi

There will be a choice of grilled food throughout: Chicken and pork, sausage, hermelin...
+ Beer, limo



KPS
KEDLIHO PÁRTY SERVIS

COFFEE

OPENING TIME

Friday: CLOSED

Saturday: 9:00 – 20:00

Sunday: 9:00 – 20:00

MENU

Coffee, Tea, Homemade limo, Desserts, Spreads on bread



9

GENERAL INFORMATION

Event title:

2023 ICF WILDWATER

CANOEING WORLD CUP LIPNO III. a IV. SP

Event date:

From the 26th to 27th of August 2023

Contact:

Website of event: <https://www.canoeicf.com>

Event Director:

Lukáš Novosad

lukasnovosad@seznam.cz

+420 728 234 605



10

KEY DAYS AND DEADLINES:

16th August – CLOSING OF NOMINAL ENTRIES

24th August – TRAINING DAY

25th August – TRAINING DAY

26th August – III. WORLD CUP AND MEDALS CEREMONY

27th August – IV. WORLD CUP AND MEDALS CEREMONY

RACE PROGRAMME

Unless otherwise noted, the venue is the race centre located in Loučovice on the left side of the river just above the finish line.

Time		Thursday 24. 8.	Note
Start	Finish		
14.00	17.00	RACE OFFICE OPEN	
15.00	16.00	TROUGH FLUSHING	
Time		Friday 25. 8.	Note
Start	Finish		
12.00	20.00	RACE OFFICE OPEN	
14.30	19.00	TRAINING TIME	Rescue will be provided at several locations
18.00		TEAM LEADERS MEETING	Only for world cup
19.00	20.00	OPENING CEREMONY	
	21.00	CLOSING TIME OF THE FINISH AREA	
Time		Saturday 26. 8.	Note
Start	Finish		
8.00	17.00	WATER IN THE RIVER BED	
8.00	17.00	RACE OFFICE OPEN	
8.00	11.30	TRAINING TIME	Training is possible only from start (point no. 1 on the map) to the lakes (point no. 6 on the map).
9.00		TEAM LEADERS MEETING	Only for czech cup
12.00		START OF THE RACE	
17.00		MEDAIL CEREMONY	
20.00		CLOSING TIME OF THE FINISH AREA	
Time		Sunday 27. 8.	Note
Start	Finish		
8.00	14.45	WATER IN THE RIVER BED	
8.00	16.00	RACE OFFICE OPEN	
8.15		TEAM LEADERS MEETING	Only for czech cup
9.30		START OF THE RACE	
14.45		MEDAIL CEREMONY	
15.45	18.30	CONCERT	
20.00		CLOSING TIME OF THE FINISH AREA	
19.30	23.00	AFTER PARTY	https://goo.gl/maps/eEy8Aude2AHtY61U7
ORDER OF CATEGORIES			
K1W (CZECH CUP) > K1W (WORLD CUP) > C1M (CZECH CUP) > C1M (WORLD CUP) > K1M (CZECH CUP) > K1M (WORLD CUP) > C1W (CZECH CUP) > C1W (WORLD CUP) 30 MIN PAUSE C2M (CZECH CUP) > C2M (WORLD CUP) > C2W (WORDL CUP)			

ENTRIES, ACCREDITATIONS & PARTICIPATION FEE

ENTRIES & ACCREDITATIONS

Entries and accreditation requests must be done by the National Federation using the ICF's online entries system (SDP): <https://icf.msl.es/icf/icf.jsp>

For detailed instructions on how to submit entries, please read the SDP user guide. Any questions or issues to entries or accreditation should be sent to sdp@canoeicf.com prior to the respective deadline.

SDP user guide http://www.canoeicf.com/sites/default/files/nf_userguide_v2.2.pdf.

PARTICIPATION FEE

Entry fee: 70 Euro / race

The payment of participation fees can be made by bank transfer before you reach Lipno.

BANK DETAILS

The payment of participation fees can be made by bank transfer before you reach Lipno or on-site upon your arrival by cash.

After all your registrations are closed you can ask us for an invoice at the following address: lukasnovosad@seznam.cz

BANK ACCOUNT NUMBER: 257499345/0600

IBAN: CZ74 0600 0000 0002 5749 9345

BIC: AGBACZPP

Currency: EUR

Owner of the account: Cesky svaz kanoistu, z.s.

Address: Zátokova 100/2, 160 17 Praha 6 – Břevnov



12



CLASSIC COURSE

WATER FLOW:

Minimum water flow: 15 m³/s

Average water flow: 18 m³/s

TRACK:

Length of the race course: 3 km

APPROXIMATE TIME OF

COMPETITORS ON THE TRACK:

K1M: 10 minutes

K1W: 11,5 minutes



ATTACHMENT 1 – LIPNO NAD VLTAVOU

Dear Racers and Spectators,

Welcome to the shore of the biggest body of water in the picturesque Czech Republic. Welcome to Lipno nad Vltavou.

It is our great pleasure to welcome you to the town whose dominant feature is the Lipno Family Resort and which offers you many first-class experiences in your free moments! If you like to walk, do not hesitate to set out for the resort's dominant feature, the Treetop Walkway, which enables you to explore the beauty of the Šumava landscape and see it from a new perspective. You will walk along a 675-metre path that takes you up to a height of 24 metres above the ground. Enjoy panoramic views of Lipno Reservoir and, when the visibility is good, you can see as far as the Alps. On the way to the top, you will enjoy many adrenaline stops and get a lot of information about the surrounding countryside and the construction of the Walkway.

Immediately adjacent to the Walkway, you will find a downhill-scooter rental shop. You will get a helmet with your scooter and then you can simply enjoy the secluded four-kilometre slope. The trail is well maintained and safe, so you can enjoy it with your friends and even with your whole family.

The Forest Kingdom in Lipno, which is the largest forest playground in the whole Šumava region, is a children's paradise where you will have a lot of fun and learn a lot of useful information. Over forty different types of attractions await visitors to the Kingdom, all of which are inspired by life in the forest and offer something for absolutely everyone, both adults and children. With your whole family, you can jump on the giant trampolines, try out the popular rope bridges and find yourself in the maze of the bandit Godoš among the young trees. You can restore your energy for your next romp in the Forest Kingdom in our Modřinek Forest Workshops, which appeal to young and old artisans alike.

You can experience an adrenaline-fuelled ride at the Bikepark in Lipno. The downhill trails are first-class fun on banked turns, terrain waves, benches, rock fields and wooden bridges. The Lipno Singletrack is also great family fun. You will ride through the forest down a 5 km bike trail intended just for you and your children. Enjoy safe cycling in a slightly different way, without traffic in the peaceful environment of the forest. The rope park right next to the main parking lot with a pulley crossing over the pond is just the icing on the cake.

If you don't have your sports equipment with you, don't worry. Our rental shops will provide you with everything you can imagine. From a bike and bike helmet to a scooter and even a boat, with which you can be the captain for a while on Lipno Reservoir. Look for Intersport Rent Lipno – Kapitanát rental shop.

You don't have to worry about bad weather either, because there are a lot of alternatives in Lipno. One of them is the Aquaworld water paradise, where you can relax throughout the year. You can unwind in the whirlpool, where you can enjoy a beautiful view of Lipno Reservoir. Aquaworld is wheelchair accessible.

And if you're hungry or thirsty, the STODOLA restaurant will take care of you. For those with a sweet tooth, we recommend the Povidloň pastry shop. In short, Lipno offers countless possibilities and unforgettable experiences in the middle of the Šumava landscape. You can find everything you need to know at lipno.info.

ATTACHMENT 2 – VYŠŠÍ BROD

From the history of Vyšší Brod It all started many years before the Cistercian monastery was founded in 1259. Apart from the deep forest and steep mountain range of Bohemian Forest (Šumava), this place was the easiest way to Muhlviertel in Upper Austria. Through the Vyšší Brod pass led one of the trade routes connecting Bohemia with the Danube region known already in the 10th century. Caravan of traders was coming to the "upper ford" making it easier for them to cross the Vltava river. Stopping traders founded the village of Hohenfurt - Upper Ford, Vyšší Brod in Czech. Later it became a vassal town of Rosenberg family dominium.

True pearl of Southern Bohemia is Cistercian abbey Vyšší Brod, which was established by Vok I. of Rosenberg with other family members and it became a family tomb. First monks came from Wilhering monastery, close to Linz. Abbey was a cultural, scientific and administrative centre with outstanding meaning.

Cistercians take care of many important artefacts from the House of Rosenberg. During the guided tours visitors can get to know cultural heritage and understand historical development, as well as the present. Post museum, Závěšs reliquary cross, tourist routes - Opatská I., Opatská II., Čertova stěna (Devils wall), Čertovy proudy (Devils streams), pilgrimage site Maria Rast, Kraví hora, The southernmost point of the Czech republic, castle Rožmberk, Lipno dam, Vítkův Hrádek.

Accommodation in Vyšší Brod: Hotel Šumava, hotel Panský dům, Kemp pod hrází, Rekreační zařízení u nádraží, Penzion Křížové pole, Alpská růže, Romance U Krotkých, U Candrů, U Mikešů, Inge, Penzion Herbertov.

Good restaurants: Hotel Šumava, Body 21, Panský dům, Pacho grill, Penzion Inge Main shopping sites: Austrian Outlets in Studánky, 2 km from Vyšší Brod in the direction to Austria.

All information are provided in Information centre Vyšší Brod, Náměstí 104, former chapel.

Pavel Mikule,

Vyšší Brod information centre officer

