



Český Krumlov Sights, Museums, Galleries

Český Krumlov Information Centre
náměstí Svornosti 2, CZ-38101 Český Krumlov
+420 380 704 622
info@ckrumlov.info

www.ckrumlov.info
[@ceskykrumlovofficial](https://www.facebook.com/ceskykrumlovofficial)

Layout and typography: Čestmír Sukdol
Photos: Tomáš Perzl, Jaqueline Bremmer,
Jiří Dužár, Tomáš Kasal
English: Bryce Belcher
Map: Vydavatelství MCU
Print: Tiskárna Černý

Published by DMO Český Krumlov Region, z. s. with the support of the state budget of the Czech Republic from the programme of the Ministry for Regional Development.

český
krumlov
region | destination
management



MINISTRY
OF REGIONAL
DEVELOPMENT CZ



1 ticket to 5 museums and galleries
Discounted admission
Valid for 12 months



CENTURIES OF HISTORY

Český Krumlov Castle

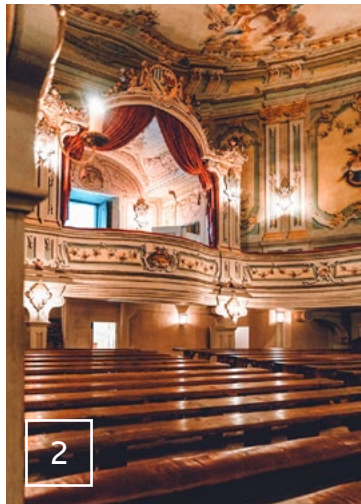
The castle complex, the second largest in Czechia after Prague Castle, is an architectural gem and a dominant town landmark. It consists of 41 buildings over 5 courtyards and a 12-hectare castle garden. Two main tour routes present rooms from the Renaissance, Baroque, and 19th century.



THE TOWN'S GRAND SYMBOL

Castle Tower and Museum

The tower and museum are open all year round and highlight the Rožmberks and other noble families who lived in Český Krumlov. The museum features valuable exhibits from the castle's depositories and a historical home cinema. The castle tower offers a 360° view of the town and its surroundings.



ONE OF A KIND

Baroque Theatre

The Castle Baroque Theatre is one of the world's most important theatre monuments. It includes the original theatre building, orchestra pit, stage, and machinery, as well as sets of preserved theatre costumes and costume accessories, decorations, props, and lighting equipment.



NOSTALGIA IN BLACK AND WHITE

Museum Fotoatelier Seidel

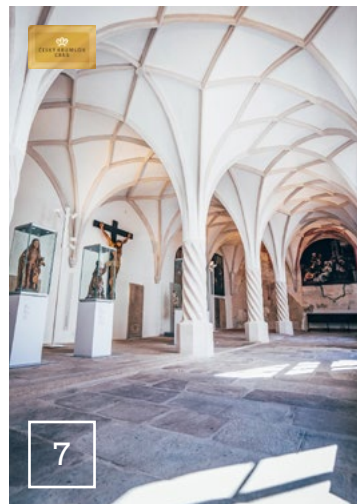
Travel back to the early 20th century and discover the beginnings of professional photography in our region through the story of the Seidel father and son duo. The museum boasts impressive authenticity, still-functional photo equipment, and a historical studio where you can have your vintage photo taken.



FOR CONTEMPORARY ART LOVERS

Egon Schiele Art Centre

This internationally renowned gallery is housed in the large Renaissance building of the former municipal brewery and presents exhibitions of contemporary visual art as well as a permanent exhibition on the life and work of the Austrian expressionist Egon Schiele.



FOR YOUR MIND AND SPIRIT

Monastery Museum

This is an oasis of peace and spirituality in the heart of the old town. Explore the Church of Corpus Christi and the Virgin Mary, the Gothic cloister with lunette paintings, St. Wolfgang's Chapel with medieval wall paintings, and the Baroque picture gallery. The complex also includes a large garden.



THE TOWN AND REGION'S HISTORY

Regional Museum

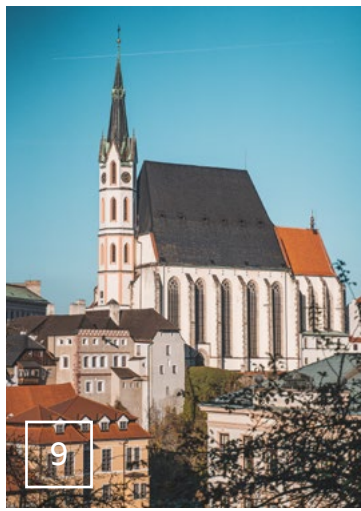
The history of the town and region are presented through archaeological, craft, ethnographic and other collections. A 17th century Jesuit pharmacy and a detailed ceramic model of the historic center of Český Krumlov are only a part of the permanent exhibition. Seasonal exhibitions change every year.



WHERE THE KIDS COME FIRST

Historic Play World

Explore, play, and create in an area designed especially for children. The interactive exhibition lets you try out book printing, potion mixing, quill writing, or enjoy a playroom full of historical toys and games. All this in the Český Krumlov monasteries, plus a gallery and museum.



A GOTHIC SANCTUARY

St. Vitus Church

This late Gothic church pairs with the castle tower to form the town's characteristic roofscape. Inside the three-nave building you can admire Gothic figural frescoes from the early 15th century, amazing vaulting, the early Baroque main altar, and Renaissance tombstones.

9



UNDER THE GREEN SPIRE

St. Jošt Church & Wooden Rafting Museum

This Latrán church goes back to the 14th century. Closed as a church in 1787, it was used as a casino with a dance hall and for housing since the 20th century. Today it features an exhibition on the tradition of Czech wooden rafting, attic spaces with preserved Renaissance roof construction, and the tower.

13

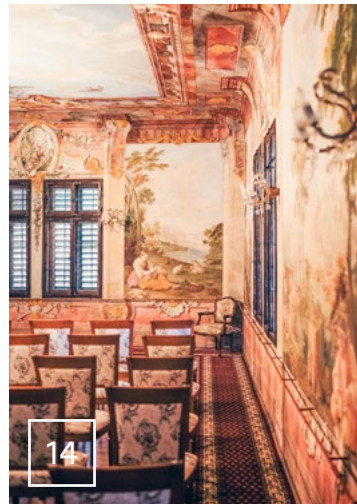


A SPECIAL PLACE WITH A VIEW

Pilgrimage Site on Křížová hora

The Baroque complex on Cross Hill (Křížová hora) with its octagonal chapel from 1710 is a spiritual and cultural site with a strong energy and a beautiful panorama onto Český Krumlov and surroundings. On your way to the top, you'll pass along a Stations of the Cross with six niche chapels from 1750–1755.

10



A FEUDAL MANOR

Kvitkův Dvůr Estate

This grandiose farmhouse behind the castle gardens was built as a Krumlov vassal residence in the 13th–14th centuries, but its present Rococo appearance is from the late 18th century. Tours are offered by its private owner and feature elaborate interior wall paintings by F. J. Prokyš.

14



AN ART NOUVEAU BEAUTY

Synagogue

Český Krumlov's Art Nouveau pearl from 1909 survived the wars and the communist regime without any major damage. In 2012 it was reopened after a sensitive reconstruction, and today it hosts exhibitions and cultural events. A small permanent exhibition presents the history of the town's Jewish culture.

11



FROM BREWING TO ART

Port 1560

Head to Port 1560 at the former noble brewery with four different exhibitions: Life, Work, Art, Dreams. You'll see how life was lived and how beer was brewed, and you can admire the best of modern art. Spend the whole day in a beautiful setting with a fantastic and unique energy.

15

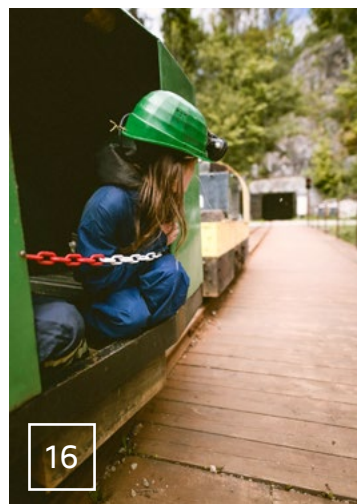


THAT LITTLE RED HOUSE

Egon Schiele Garden Studio

In 1911, Egon Schiele lived here on the banks of the Vltava River surrounded by flower terraces. You can recall the atmosphere of the place where some of his more famous paintings were created – a reconstruction of the artist's apartment is open to the public in the summer months.

12



UNDERGROUND ADVENTURES

Graphite Mine

Ready to go underground? Have you ever seen how graphite was extracted? An underground tour of the Graphite Mine will show the conditions in which the miners worked, how the work was carried out, plus how graphite was processed and what it was used for.

16



WHERE PUPPETS COME TO LIFE

Fairytale House

This little museum features a family collection of over 400 puppets and marionettes from the workshops of South Bohemian, Czech, and foreign master carvers and puppeteers arranged mostly in thematic groups. You can even put on a puppet theatre performance with your children.

17



LEGENDS ON TWO WHEELS

Historical Motorcycle Museum

Motorcycle enthusiast or not, you'll still enjoy this exhibition in the Krumlov Mill. Admire a collection of motorbikes of various Czech and foreign brands, including Jawa and ČZ as well as early BMWs and Harley Davidsons. Also featured are historical bicycles and many items related to the history of motoring.

21



GREEN GEMSTONE

Moldavite Museum

An interactive exhibition introduces you to the story and properties of a unique South Bohemian stone – from planetary collisions to the formation of Moldavite millions of years ago after the impact of a huge meteorite on Earth. The museum also features Moldavites from various locations.

18



FOR FILM FANS

Film Legends Museum

Do you like films, comics, action heroes, and legends of the silver screen? Then don't miss the Film Legends Museum. There are 250 exhibits on display: statues, figurines, replicas of the most famous films, and comic and fairy tale heroes from life-size to smaller scale or their details.

22



A MAZE IN GLASS

Mirror Maze

The hall of mirrors with its 90 looking glasses creates an effect of endless corridors and optical illusions. It's followed by an unusual crystal maze composed of clear glass. Don't miss the popular curved mirrors that distort your figure in all directions.

19

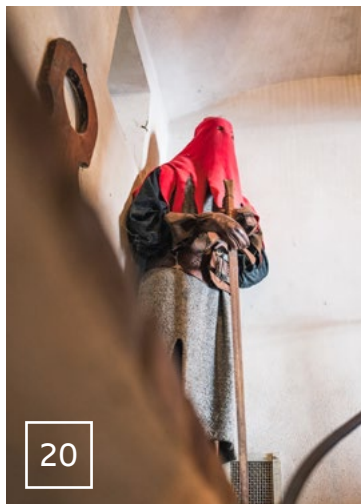


PHOTOS STRICTLY PERMITTED

3D Museum

Become a living part of an exhibition that works with 3D effects and transport yourself to unexpected situations and places. You can touch everything and take pictures everywhere, like for example in the palm of Albert Einstein's hand, on the run from a predatory shark, or as a statue with angel wings.

23

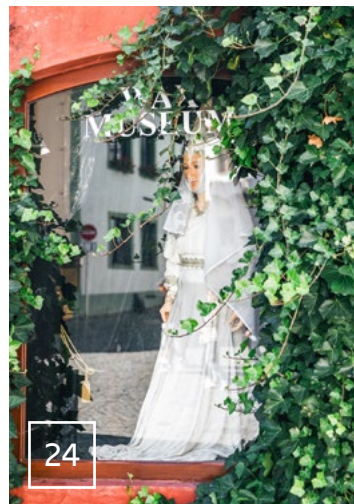


MEDIEVAL JUSTICE

Museum of Torture

This ghastly exhibition of the Middle Ages reveals the inhumane methods of historical tormentors. Hundreds of exhibits and torture instruments are on display, with the atmosphere completed by wax figures of executioners and their victims.

20



FROM CHAPLIN TO ŠVEJK

Wax Museum

The Krumlov Wax Museum focuses on the South Bohemian region and its personalities as well as famous figures from the world of art and history. The mysterious cellar features a medieval town with an alchemist's workshop and an old tavern, and shows the work of South Bohemian fishermen.

24